

2 Bed Apartment

London, United Kingdom
Reference: 752841

£1,050,000



2 Bedrooms



2 Bathrooms



Apartment

Property Description

A unique apartment with fantastic London and Thames river views. This apartment is located on the fourth floor of this iconic building. This apartment has an approximate area of over 1250 SQ FT.

The door of this apartment opens into an amazing reception with double-height ceilings, a private balcony, and an open-plan kitchen. A Double bedroom with wardrobes on this level and a family bathroom.

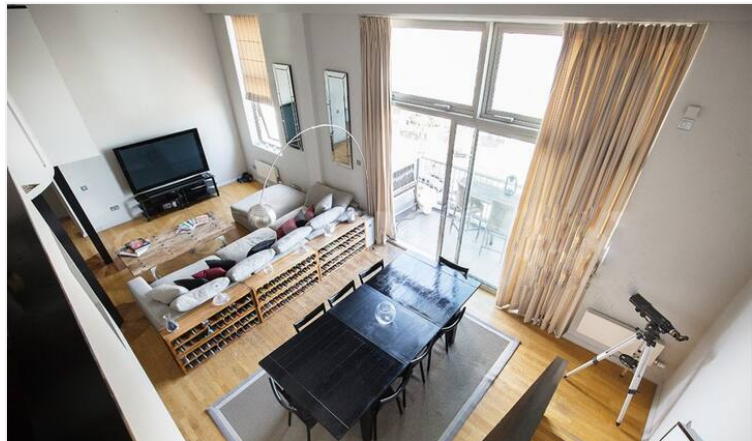
A Master bedroom with an en-suite bathroom and wardrobes, a study area in the mezzanine.

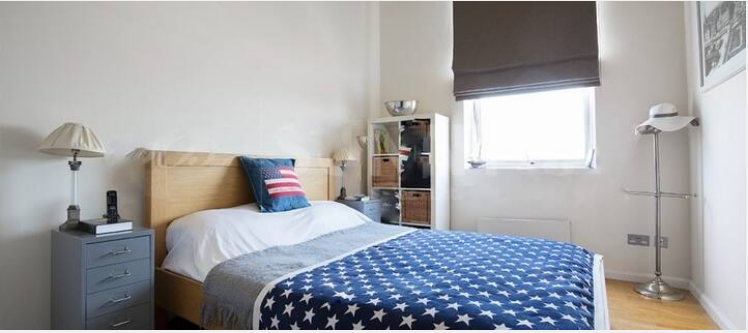
Allocated car parking bay, 24-hour concierge, and an on-site gym with special fees for residents of the building.

The Piper Building is located by the end of Peterborough Road, close to private schools, parks, and fine restaurants. Parsons Green (District line) and Wandsworth Town train station (easy access to central London) are minutes away from the building.

The building is currently undergoing cladding remediation works as part of a funded program. This property presents a rare opportunity to purchase at a significantly reduced price in one of Fulham's most desirable locations. Ideal for cash buyers or long-term investors seeking value and future capital growth.

Photo Gallery





Property Details

- **Property Type:** Apartment
- **Location:** London, United Kingdom
- **Internal Area:** 1227ft²
- **Land Area:** 0ft²
- **Price:** £1,050,000
- **Bedrooms:** 2
- **Bathrooms:** 2